

Data Processing in Cloud

Cârnu Florin-Augustin
Coord. Conf. Dr. Ing. Bujor Păvăloiu



Cloud native architecture

Cloud native is building software applications as a collection of independent, loosely coupled, business-capability-oriented services (microservices) that can run on dynamic environments (public, private, hybrid, multi-cloud) in an automated, scalable, resilient, manageable, and observable way.



Hybrid Cloud

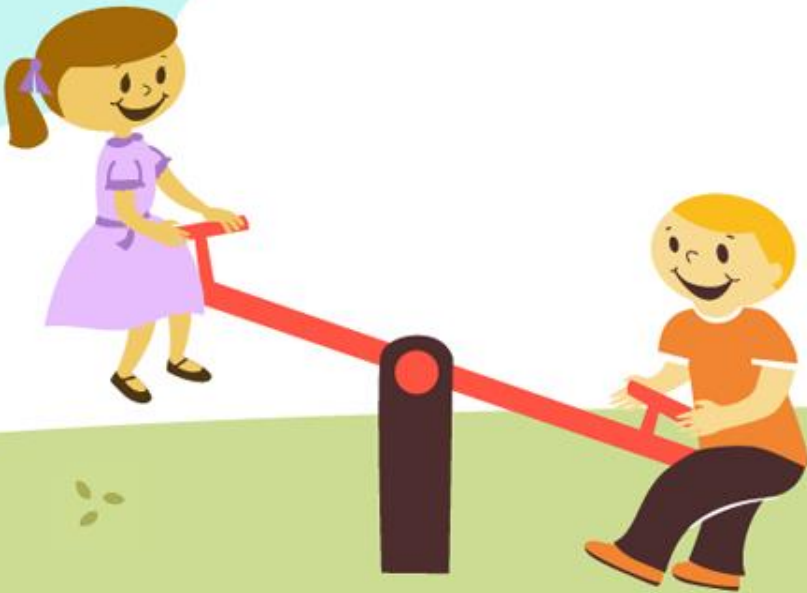
According to the National Institute of Standards and Technology [3], a hybrid cloud is a "composition of two or more distinct types of cloud infrastructure that are linked together using proprietary and standardized technology for the purpose of data and application mobility."

- Workload distribution is accomplished through mobility.
- Networking connects systems and devices through LAN, WAN, or VPN.
- Implementation of a complete unified automation tool.
- A comprehensive and powerful middleware for abstracting background information.
- Incorporating resource availability and scalability.
- Bringing catastrophe management and recovery techniques together.



Increase in Hybrid Cloud

An application programmer is always in need of assistance for cutting-edge technology. A developer's key worry is the availability of high-end resources and cutting-edge technical assistance. Flexibility in the deployment of changing technological services, rapid availability of additional resources required by the solution, peak support for on-premise systems, and smooth and continuous integration of system services are critical concerns that must be addressed in hybrid cloud.



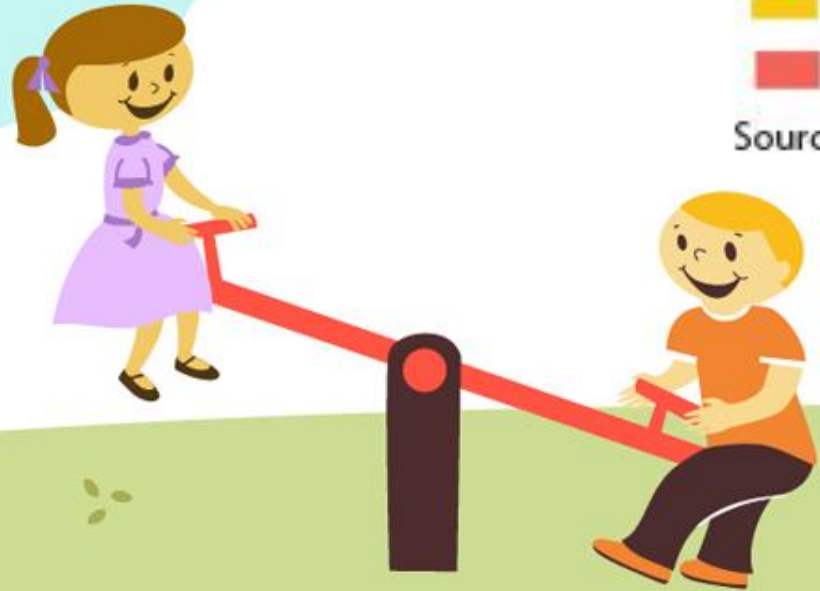
Evolution

Hybrid Cloud Market - Growth Rate by Region (2020 - 2025)

Regional Growth Rates

- High
- Mid
- Low

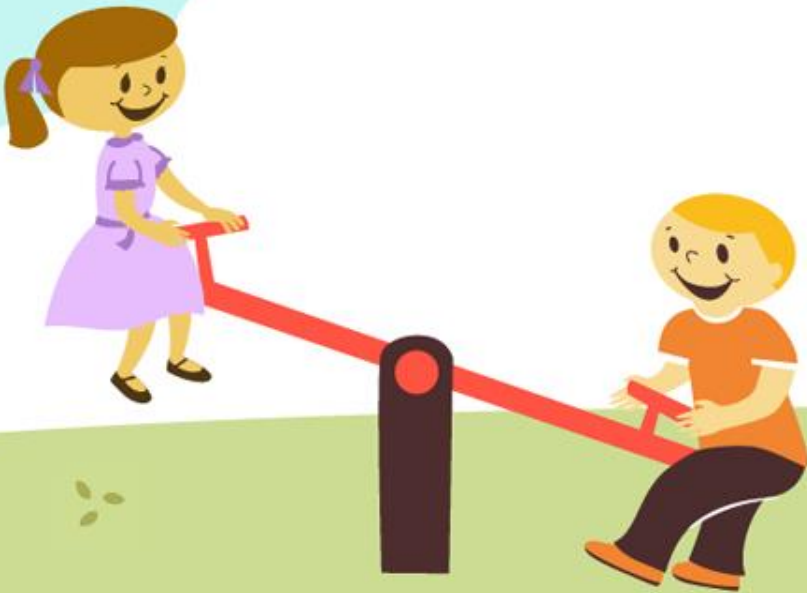
Source: Mordor Intelligence



Use of AI in Hybrid Cloud

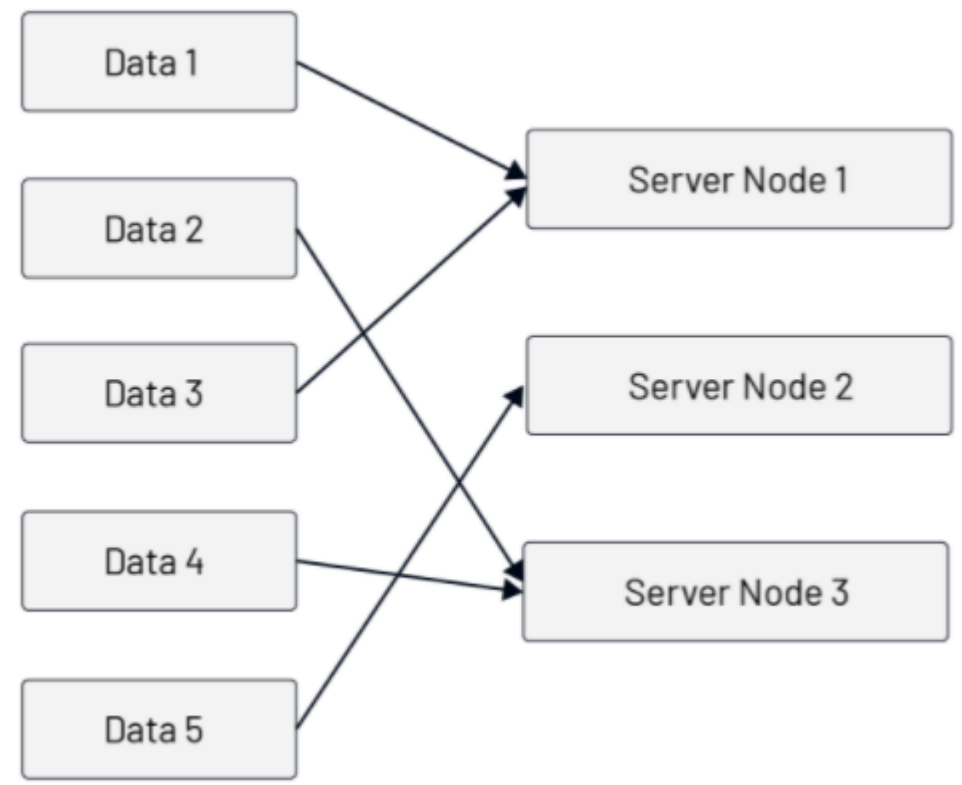
The term "AI in the cloud" has become popular in this context. The majority of cloud-based service providers provide management tools that include AI-based technology.

This provides a variety of services to the consumer, ranging from picture recognition to large data analysis

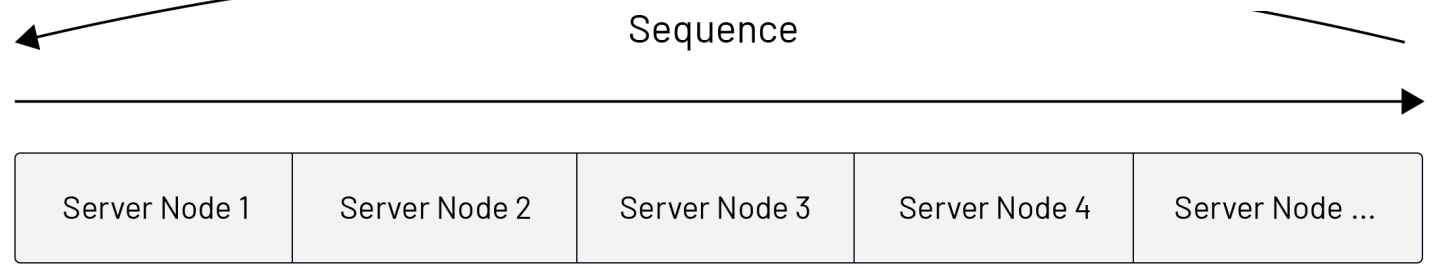


Performance

SkyWalking agents provide little extra load for target services.



Apache SkyWalking



↑ tetrade



Working together for a **green**,
competitive and **inclusive** Europe

Thank you
for your
attention.

Disclaimer: This document was realised with the EEA Financial Mechanism 2014-2021 financial support. Its content (text, photos, videos) does not reflect the official opinion of the Programme Operator, the National Contact Point and the Financial Mechanism Office. Responsibility for the information and views expressed therein lies entirely with the author(s).

